

HOW TO ACCESS SOFTWARE REMOTELY THROUGH WEBFAS

1) Typing <http://webfas.yorku.ca> on your browser's url address bar will redirect you to the following screen:

The screenshot shows a Mozilla Firefox browser window displaying the WebFAS website. The browser title is "Webacadlabs - Students - Mozilla Firefox". The address bar shows the URL "http://www.yorku.ca/computing/students/labs/webfas/". The page content includes the York University logo, navigation menus, and a main section titled "COMPUTER LABS" with "All about WebFAS". A "LOGIN" button is highlighted with a green circle.

COMPUTER LABS

All about WebFAS

WebFAS is a new UIT web service that enables remote access to many applications in labs and Libraries. This service requires an [FAS - File Access Service](#) account.

WebFAS is available through any computer which meets the requirements below:

Quick Links...

- [System requirements](#)
- [Account requirements](#)
- How to access WebFAS**
 - [Microsoft Windows](#)
 - [Macintosh OS X](#)
 - [Unix](#)
- [Supported applications](#)
- [Launching Applications for WebFAS](#)
- [Frequently Asked Questions](#)




NEW Access requirements if you are connecting from

- AirYork wireless, home or residence:**
VPN client, <http://vpn.yorku.ca>
- Keele/Glendon campus computer with a wired connection:**
no further client requirements

Login to WebFAS with your FAS - File Access Service login

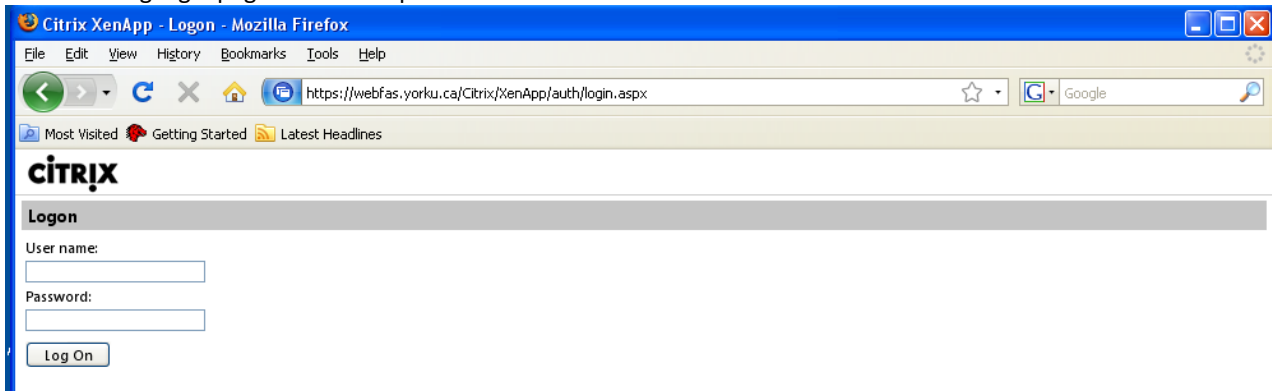
LOGIN

System Requirements

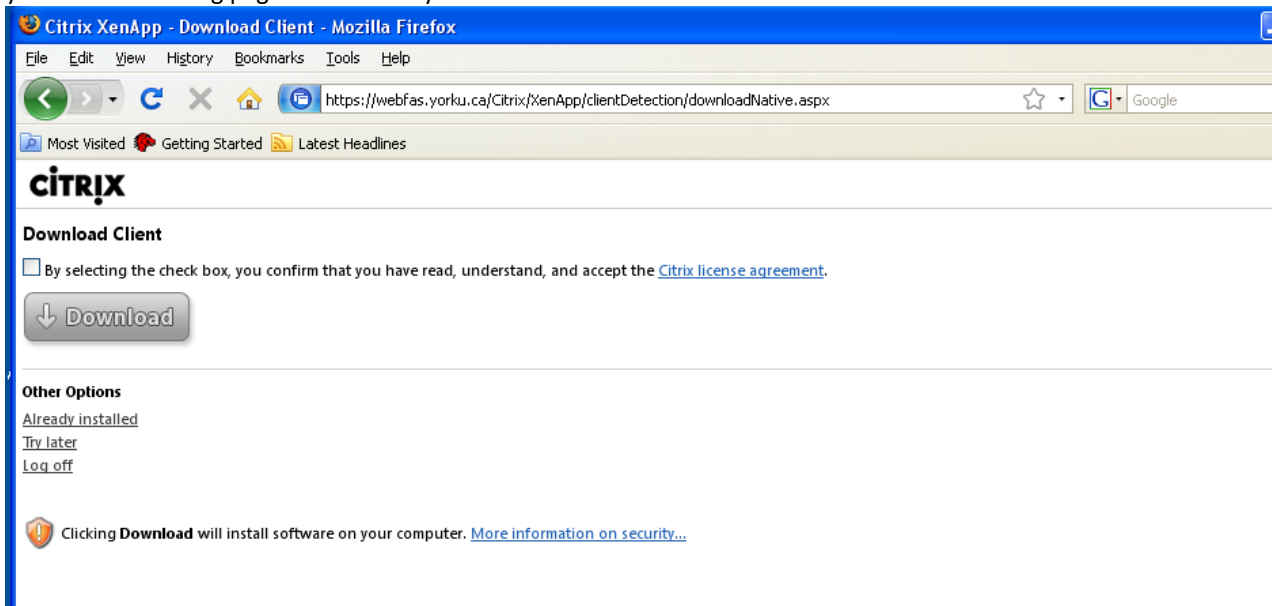
 Windows Microsoft Windows requirements	 Mac Mac OS X requirements	 Linux /Unix requirements
Windows XP SP3, 32 and 64 bit Windows Vista SP2, 32 and 64 bit Windows 7, 32 and 64 bit Internet Explorer 8 Mozilla Firefox 3.x	Mac OS X 10.5 (Leopard) Mac OS X 10.6 (Snow Leopard) Safari 5 Mozilla Firefox 3.x	Firefox 2.x, ICS Client for Linux
Internet connection: 56 Kbps or higher. (min. 500 Kbps high speed connection highly recommended).		

If you haven't done so, through "Manage my services" (<https://mms.yorku.ca>) activate your ACADLABS account. On the top of the WebAcadlabs home page (see below) click on the LOGIN button.

2) The following login page will come up.

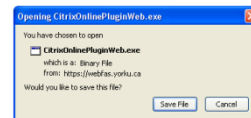
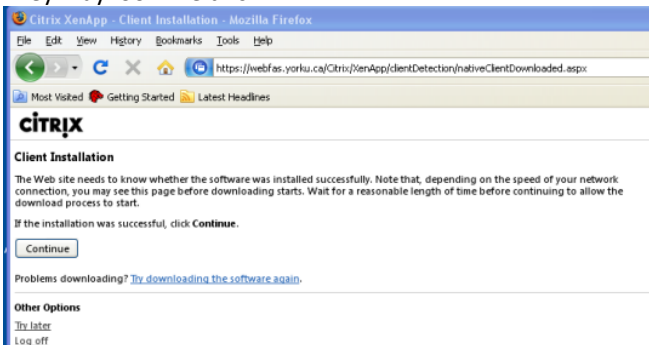


Enter your FAS account username and password. If this is the first time you try to connect to WEBFAS it will take you to the following page automatically:

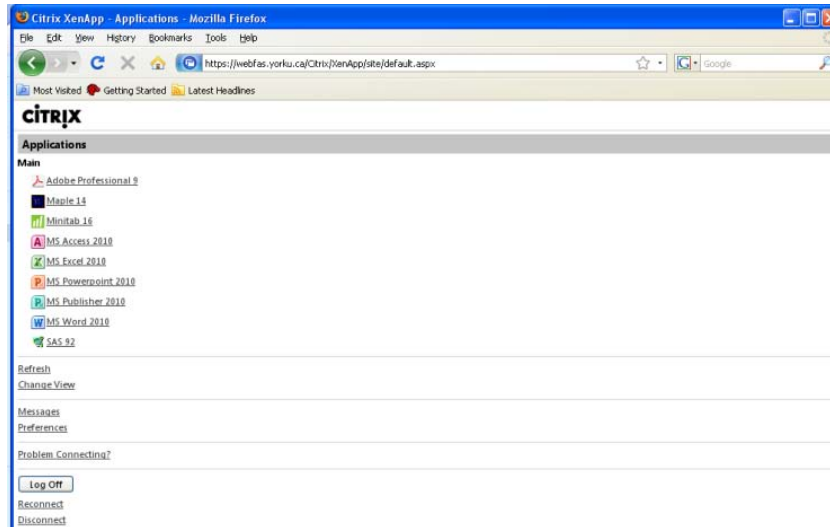


Click on the box and then on the Download button.

3) The following screen will come up and a dialog window will pop up asking you if you want to save the Citrix .exe file. They may look like this:



Once you have downloaded the .exe file run it to install the Citrix client plugin. If it is successfully installed (and your browser hasn't crashed) click Continue. If your browser crashed during the installation, just close it, re-open it, and go to webfas.yorku.ca again and click on log in. Once you have logged in (or after pressing Continue) you will be taken to the following page:



To connect remotely to SAS click on the icon/link labelled SAS 9.2. A dialog window will pop up letting you know you are connecting to SAS. This will apply to any other software available through WEBFAS.

- 4) SAS will open as if you had it installed in your computer, with one **very important** difference. You cannot access files (open or save) that are on your computer's hard drive or removable storage (e.g. USB keys). The only files that you can open are those that you have on your network folder at York (a.k.a. your F drive). Thus, to *Open* a file in SAS it has to be saved on your F drive at York¹. In order to use SAS macros, it is recommendable to create a folder under your F Drive named 'macros' and save the macros you need in there. You can call the macros that you will use during a SAS session by running a '%include' command (e.g. `% include 'f:\macros\datachk.sas';`)
- 5) When you save a file (a program or export a dataset) be sure to save it to your F drive, NOT to the "My Documents/My SAS Files/9.2/" folder. This will be equivalent to save it on the hard drive or desktop of one of the terminals at the computing labs at York (i.e. they will be erased when you log off the system).
- 6) After you close the application, be sure to Log Off/Disconnect from WEBFAS on your browser.

¹ Your F drive's FTP address is <ftp://labfiles.yorku.ca> (which will ask you for your Acadlabs username and password). Any browser (e.g. Firefox) can read the files, but you can use an FTP program like Core FTP or Filezilla to upload (and download) files to your F drive remotely.